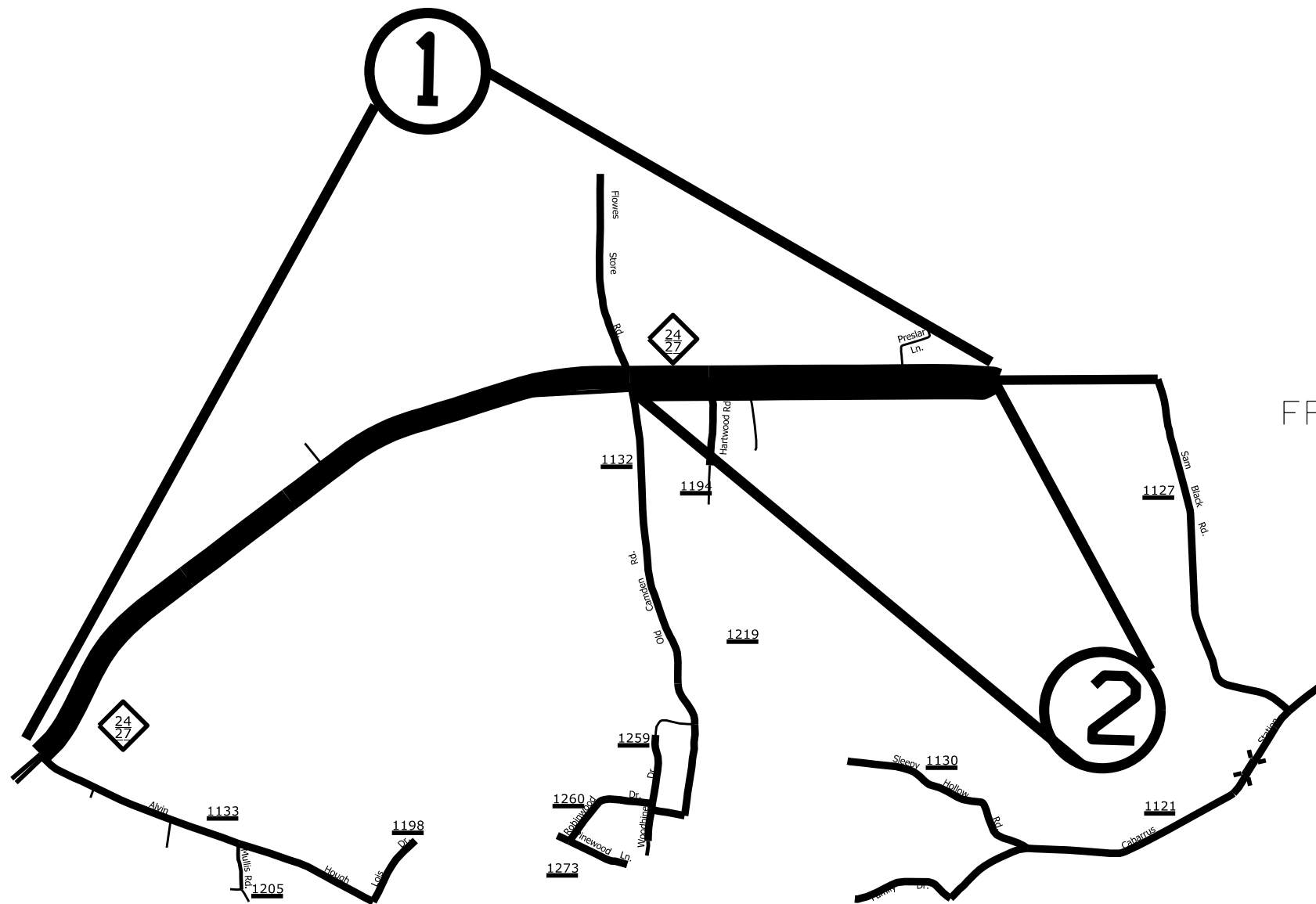


STATE	PROJECT NO.	SHEET NO.	TOTAL SHEETS
N.C.	2026CPT.10.06.10131 2026CPT.10.06.10132	1	9
F.A. PROJECT NO.			

ENLARGED MUNICIPAL AND SUBURBAN AREAS  
**CABARRUS COUNTY**  
 NORTH CAROLINA

PREPARED BY THE  
 NORTH CAROLINA DEPARTMENT OF TRANSPORTATION  
 DIVISION OF HIGHWAYS - DIVISION 10 DISTRICT 1



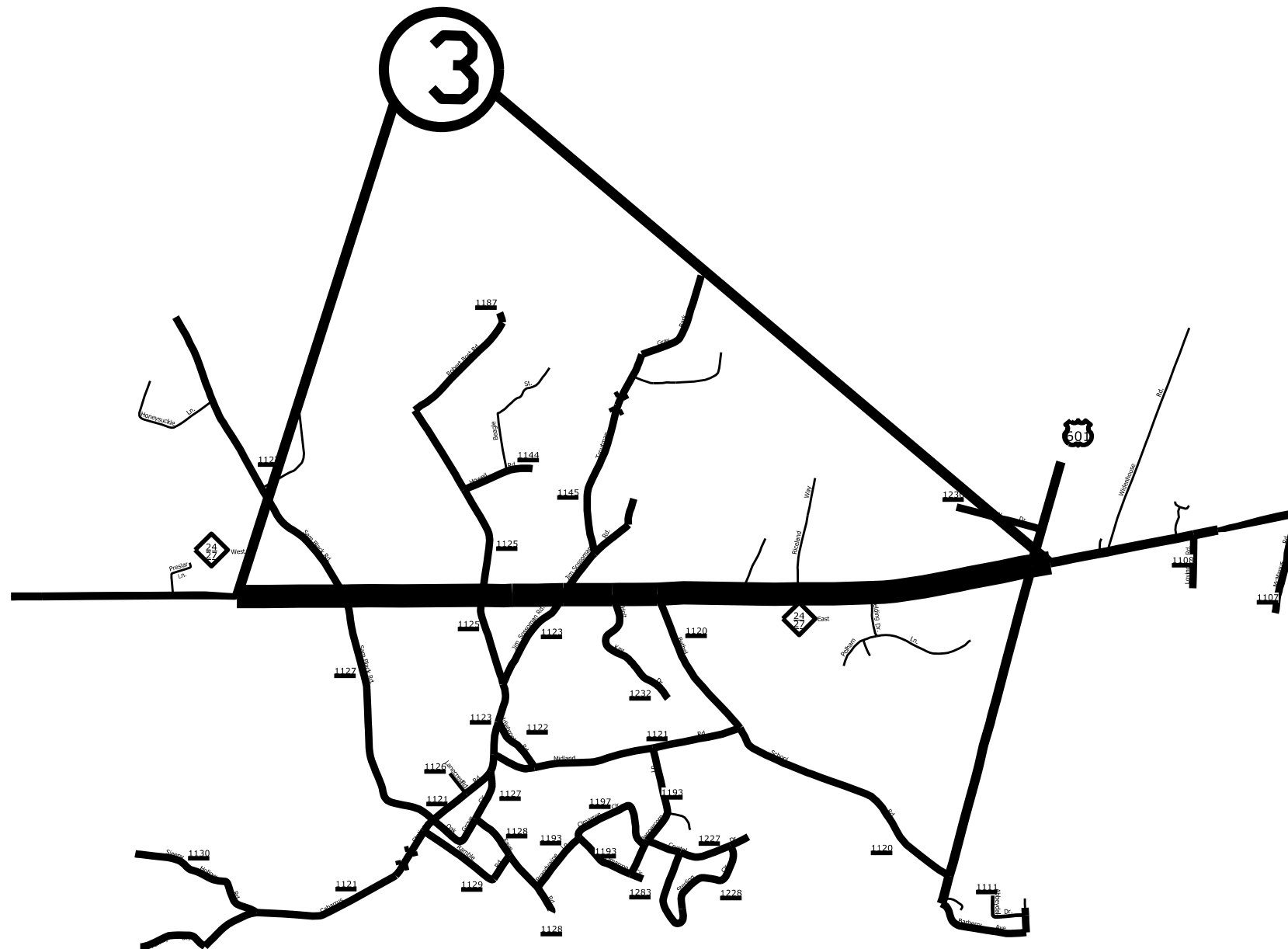
MAP #1 - NC 24/27 W  
 2.91 MILES  
 FROM THE BEGINNING OF THE DIVIDED HIGHWAY (MP 5.49)  
 TO THE MECKLENBURG COUNTY LINE (MP 8.40)

MAP #2 - NC 24/27 E  
 0.96 MILES  
 FROM PAVEMENT JOINT EAST OF  
 SR 1132 OLD CAMDEN ROAD (MP 1.94)  
 TO THE DIVIDED HIGHWAY (MP 2.90)

STATE	PROJECT NO.	SHEET NO.	TOTAL SHEETS
N.C.	2026CPT.10.06.10131 2026CPT.10.06.10132	2	9
F.A. PROJECT NO.			

ENLARGED MUNICIPAL AND SUBURBAN AREAS  
**CABARRUS COUNTY**  
 NORTH CAROLINA

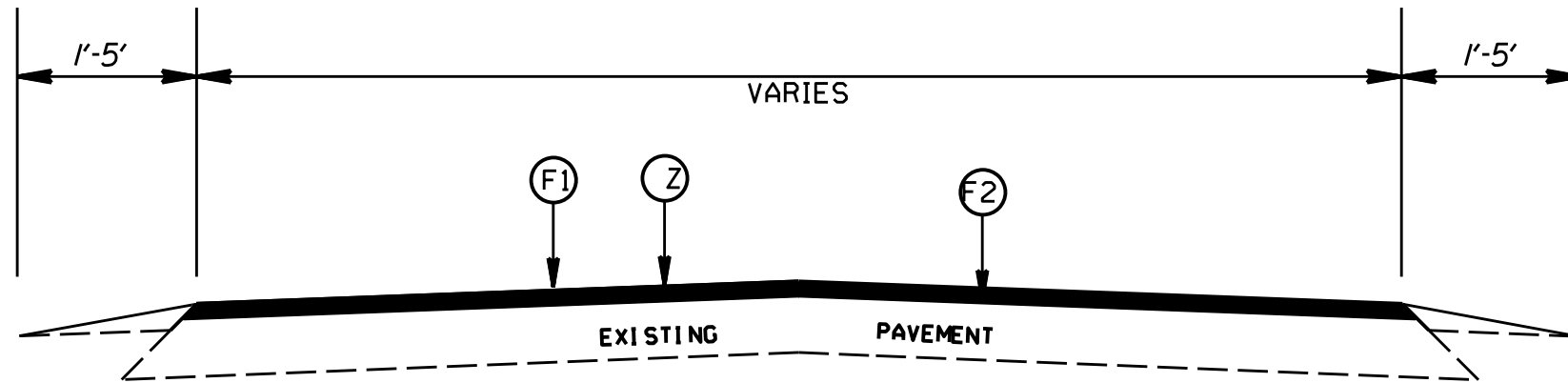
PREPARED BY: HDIE  
 NORTH CAROLINA DEPARTMENT OF TRANSPORTATION  
 DIVISION OF HIGHWAYS - DIVISION 10 DISTRICT 1



MAP #3 - NC 24/27 W  
 3.18 MILES  
 FROM DIVIDED HIGHWAY (MP 2.90)  
 TO 500 LF PAST US 601 (MP 6.08)



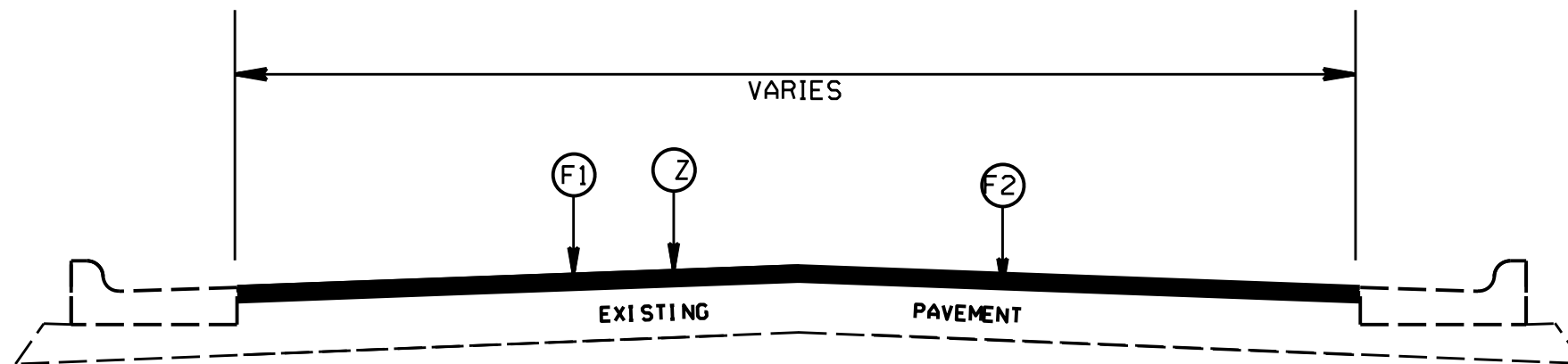
STATE	PROJECT NO.	SHEET NO.	TOTAL SHEETS
N.C.	2026CPT.10.06.10131 2026CPT.10.06.10132	4	9
F.A. PROJECT NO.			



TYPICAL SECTION NO. 1


- MAP 1 - NC 24/27 W
- MAP 2 - NC 24/27 E
- MAP 3 - NC 24/27 W - STA. 174+66 TO 177+76
- MAP 4 - NC 24/27 E - STA. 174+66 TO 177+76

PAVEMENT SCHEDULE	
F1	LATEX MODIFIED MICROSURFACING, TYPE II
F2	LATEX MODIFIED MICROSURFACING, TYPE III
Z	SEALING EXISTING PAVEMENT CRACKS & JOINTS



TYPICAL SECTION NO. 2

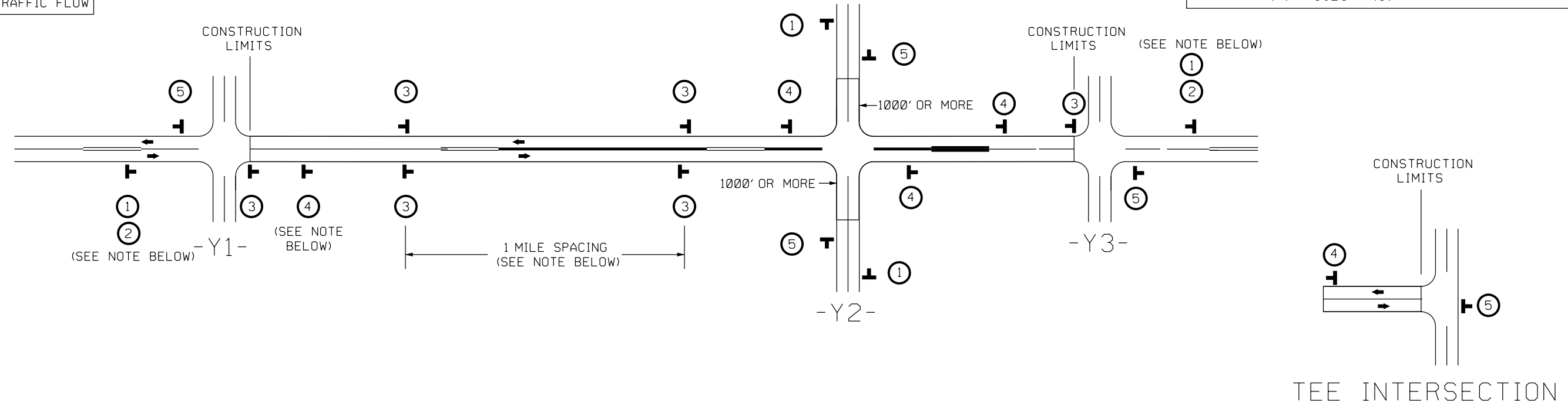
- MAP 3 - NC 24/27 W - STA. 10+00 TO 174+66
- MAP 4 - NC 24/27 E - STA. 10+00 TO 174+66

CABARRUS COUNTY MICROSURFACING 2026			
SCALE	-NA-		REVISIONS
DATE	09/25		
DWG. BY	RBS		
DESIGN BY	RBS		
APPROVED			

# SIGNING FOR RESURFACING PROJECTS

STATE	PROJECT NO.	SHEET NO.	TOTAL SHEETS
N.C.	2026CPT.10.06.10131 2026CPT.10.06.10132	5	9
F.A. PROJECT NO.			

LEGEND	
	STATIONARY SIGN
	DIRECTION OF TRAFFIC FLOW



## MAINLINE (-L-) SIGNING

## -Y- LINE SIGNING

SIGNING NOTES AND PLACEMENT PER DIRECTION	1	 W20-1 48" X 48"  W7-3aP 24" X 18"	PLACE 1000' PRIOR TO BEGINNING OF CONSTRUCTION LIMITS. ONLY USED ON -Y- LINES IF RESURFACING LIMITS EXTEND 1000' ALONG -Y- LINE.  #2 SIGN ONLY USED WHEN CONSTRUCTION LIMITS ARE 2 OR MORE MILES IN LENGTH. ROUND UP TO NEXT WHOLE NUMBER. (NO FRACTIONAL OR DECIMAL NUMBERS)	NO REQUIRED STATIONARY SIGNING FOR THE FOLLOWING -Y- LINE CONDITIONS: 1) LESS THAN 1000' OF RESURFACING ALONG -Y- LINE 2) SUBDIVISION ROADS 3) DEAD END ROADS  WHEN PAVING/CONSTRUCTION ACTIVITIES PROCEED ACROSS AN UNSIGNED -Y- LINE, PORTABLE ADVANCE WARNING SIGNS SHALL BE USED ALONG THE -Y- LINE AS SHOWN BELOW. REMOVE UPON COMPLETION OF WORK.   W20-1 48" X 48" PLACED 500' IN ADVANCE OF FLAGGER.  W20-7 A 48" X 48" PLACED 250' IN ADVANCE OF FLAGGER.
	3	 SP 13107 48" X 48"	- PLACE INITIALLY AT THE CONSTRUCTION LIMITS AND SPACE 1 MILE APART THEREAFTER. - AT TEE INTERSECTIONS INSTALL INITIALLY 1/2 MILE FROM INTERSECTION AND SPACE 1 MILE APART THEREAFTER.	
	4	 SP 13106 48" X 48"	- THESE ARE FOR -Y- LINES THAT ARE "THROUGH" ROADWAYS. - DEAD END AND SUBDIVISION ROADS ARE NOT "THROUGH" ROADWAYS. - INSTALL 500' +/- FROM EACH -Y- LINE APPROACH AS SHOWN ABOVE. - FOR MULTIPLE -Y- LINES THAT ARE SEPARATED BY 0.25 MILES OR LESS, TREAT AS A SINGLE UNIT AND INSTALL WITHIN 500' OF EACH APPROACH. - A MAXIMUM OF 2 SIGN SETS PER MILE. DO NOT INSTALL WHEN -Y- LINES ARE WITHIN 0.5 MILES FROM "END ROAD WORK" SIGN. - FOR TEE INTERSECTIONS, INSTALL WITHIN 500' +/- OF THE INTERSECTION ALONG -L- LINE.	
	5	 G20-2 A 48" X 24"	PLACE 500' FOLLOWING THE END OF CONSTRUCTION LIMITS OR AS SHOWN WHEN WORK ENDS AT A 3-WAY TEE INTERSECTION.	
	THE ABOVE SIGNS ARE ALL THAT ARE REQUIRED FOR A CONTRACTOR TO BEGIN A RESURFACING CONTRACT. ANY ADDITIONAL SIGNS REQUESTED BY NCDOT DIVISIONS SHALL BE INSTALLED WITHIN 7 BUSINESS DAYS OF THE START OF CONTRACT WORK.			

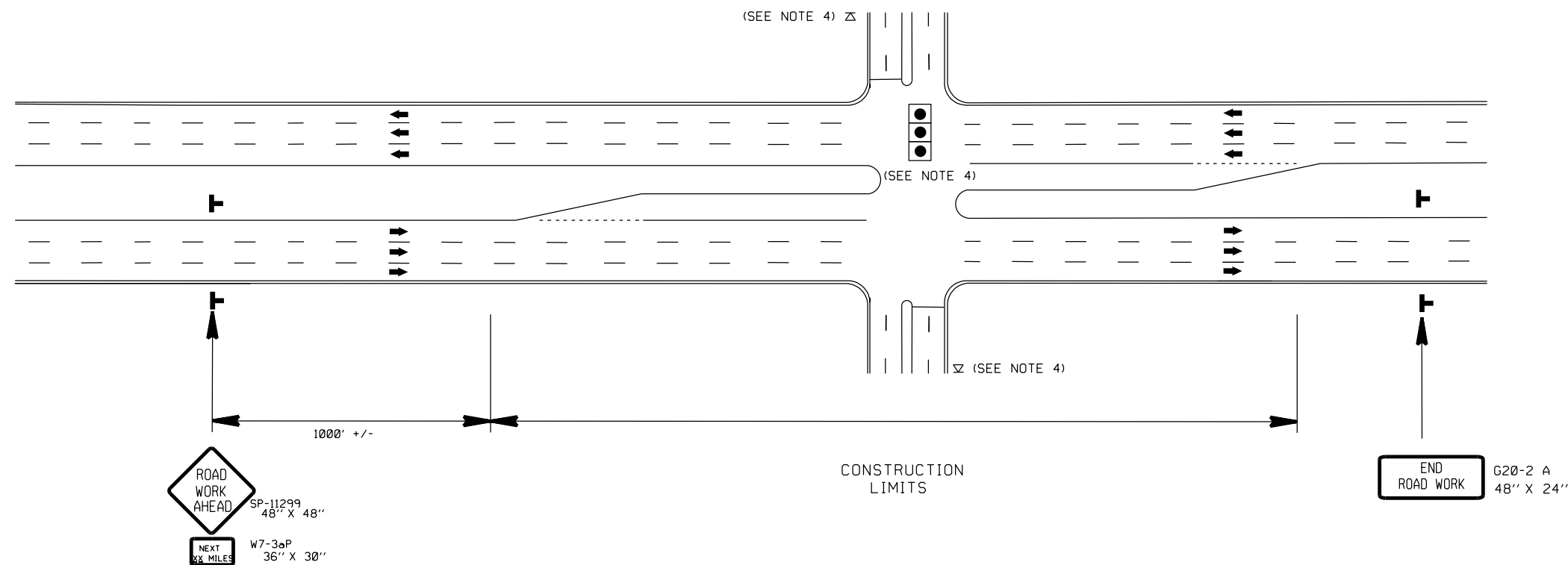
MAPS LESS THAN 2 MILES	FOR RESURFACING MAPS WITH CONSTRUCTION LIMITS LESS THAN 2 MILES IN LENGTH, NO STATIONARY SIGNS ARE REQUIRED. USE PORTABLE "ROAD UNDER CONSTRUCTION" OR "ROAD WORK AHEAD" SIGNS IN LIEU OF STATIONARY ADVANCE WARNINGS SIGNS.
------------------------	--

ADVANCE WARNING SIGNS FOR RURAL AND SUBURBAN 2-LANE ROADWAY RESURFACING

LEGEND	
⊥	STATIONARY SIGN
←	DIRECTION OF TRAFFIC FLOW

## URBAN / SUBURBAN WORKZONES

STATE	PROJECT NO.	SHEET NO.	TOTAL SHEETS
N.C.	2026CPT.10.06.10131 2026CPT.10.06.10132	6	9
F.A. PROJECT NO.			



### NOTES:

- 1) 48" X 48" SIZED SIGNS (SP-11299) MAY BE REDUCED TO 36" X 36" ON ROADWAYS WITH SPEED LIMITS OF 40 MPH OR LESS
- 2) MOUNT SIGNS THAT ARE LARGER THAN 10 SQUARE FEET IN AREA ON TWO OR MORE WOOD OR U-CHANNEL SUPPORTS. PERFORATED SQUARE TUBING SUPPORT SYSTEMS MAY SUPPORT LARGER AREAS ON A SINGLE SUPPORT. FOLLOW MANUFACTURER'S RECOMMENDATIONS. THESE SYSTEMS SHALL BE NCHRP 350 COMPLIANT AND NCDOT APPROVED.
- 3) ADVANCE WARNING SIGNS NOT REQUIRED ON NON-SIGNALIZED SIDE STREETS.
- 4) MAY USE LAW ENFORCEMENT TO CONTROL TRAFFIC AT SIGNALIZED INTERSECTIONS AS DIRECTED BY THE ENGINEER. PROVIDE PORTABLE "ROAD WORK AHEAD" (W20-1) SIGNS 500' IN ADVANCE ALONG BOTH APPROACHES FROM THE SIDE STREETS WHEN PAVING PROCEEDS THROUGH THE INTERSECTION.
- 5) LATERAL CLEARANCE AT ALL SIGN LOCATIONS SHALL BE 2' AS MEASURED FROM THE EDGE OF PAVEMENT OR THE FACE OF THE CURB. WHEN UNABLE TO OBTAIN THE LATERAL CLEARANCE WITHIN THE MEDIAN AREA USE SHOULDER MOUNTS ONLY.
- 6) SIGN MOUNT LOCATIONS SHALL NOT BLOCK SIDEWALKS OR DRIVEWAYS.
- 7) IF STATIONARY GENERAL WARNING SIGNS ARE USED, THEY WILL BE PAID FOR PER SECTION 104 OF THE NCDOT STANDARD SPECIFICATIONS AS EXTRA WORK.
- 8) IF MILLED AREAS ARE NOT PAVED BACK BY THE END OF THE WORK DAY, PORTABLE SIGNS SHALL BE USED TO WARN DRIVERS OF THE PRESENT CONDITIONS. THESE ARE TO INCLUDE, BUT NOT LIMITED TO, "ROUGH ROAD" (W8-8), "UNEVEN LANES (W8-11), "GROOVED PAVEMENT" (W8-15) w/MOTORCYCLE PLAQUE MOUNTED BELOW. THESE ARE TO BE DOUBLE INDICATED ON MULTI-LANE ROADWAYS WITH SPEED LIMITS 45 MPH AND GREATER WHERE LATERAL CLEARANCE CAN BE OBTAINED WITHIN THE MEDIAN AREAS. THESE PORTABLE SIGNS ARE INCIDENTAL TO THE OTHER ITEMS OR WORK INCLUDED IN THE TEMPORARY TRAFFIC CONTROL (LUMP SUM) PAY ITEM.



RESURFACING  
ADVANCE WARNING SIGNS  
FOR URBAN / SUBURBAN  
FACILITIES

STATE	PROJECT NO.	SHEET NO.	TOTAL SHEETS
NC	2026CPT.I0.06.I0131 2026CPT.I0.06.I0132	7	9
F.A. PROJECT NO.			

## ENGINEER'S NOTES

- PATCHING WILL BE CONDUCTED BY NCDOT FORCES
- THE TURN LANES WILL ONLY GET LATEX MODIFIED MICROSURFACING, TYPE II
- THE CONTRACTOR SHALL ALLOW A MINIMUM OF 90 DAYS FROM COMPLETION OF SEALING EXISTING CRACKS AND JOINTS PRIOR TO APPLYING LATEX MODIFIED MICROSURFACING, TYPE II AND LATEX MODIFIED MICROSURFACING, TYPE III AS INSTRUCTED BY THE ENGINEER

PROJECT NO.	SHEET NO.	TOTAL NO.
2026CPT.10.06.10131, 2026CPT.10.06.10132	8	9

### SUMMARY OF QUANTITIES

PROJECT NO	COUNTY	MAP NO	ROUTE	DESCRIPTION	TYP NO	LANES	LANE TYPE	LENGTH		BEGIN MP	END MP	1702000000-E	1838500000-N	1891000000-E		2143000000-E	5255000000-N
								SEALING EXISTING PAVEMENT CRACKS & JOINTS	VACUUM TRUCK			LATEX MODIFIED MICROSURFACING, TYPE II	LATEX MODIFIED MICROSURFACING, TYPE III	BLOTTING SAND	PORTABLE LIGHTING		
								MI	FT			LB	WK	SY	SY	TON	LS
2026CPT.10.06.10131	Cabarrus	1	NC-24/27 W	FROM THE BEGINNING OF THE DIVIDED HIGHWAY TO THE MECKLENBURG COUNTY LINE	1	2	MD	2.91	30	5.49	8.40	1	0.20	62,841	53,691	6	0.41
<b>TOTAL FOR MAP NO. 1</b>								<b>2.91</b>				<b>1</b>	<b>0.20</b>	<b>62,841</b>	<b>53,691</b>	<b>6</b>	<b>0.41</b>
2026CPT.10.06.10131	Cabarrus	2	NC-24/27 E	FROM PAVEMENT JOINT EAST OF SR 1132 OLD CAMDEN ROAD TO THE DIVIDED HIGHWAY	1	2	MD	0.96	30	1.94	2.90	1	0.20	18,377	17,648	3	0.14
<b>TOTAL FOR MAP NO. 2</b>								<b>0.96</b>				<b>1</b>	<b>0.20</b>	<b>18,377</b>	<b>17,648</b>	<b>3</b>	<b>0.14</b>
2026CPT.10.06.10131	Cabarrus	3	NC-24/27 W	FROM DIVIDED HIGHWAY TO 500 LF PAST US 601	1,2	2	MU	3.18	24	2.90	6.08	1		50,312	47,634		0.18
<b>TOTAL FOR MAP NO. 3</b>								<b>3.18</b>				<b>1</b>		<b>50,312</b>	<b>47,634</b>		<b>0.18</b>
<b>TOTAL FOR PROJ NO. 2026CPT.10.06.10131</b>								<b>7.05</b>				<b>3</b>	<b>0.40</b>	<b>131,530</b>	<b>118,973</b>	<b>9</b>	<b>0.73</b>
2026CPT.10.06.10132	Cabarrus	4	NC-24/27 E	FROM DIVIDED HIGHWAY TO 500 LF PAST US 601	1,2	3	MU	3.18	36	2.90	6.08	7,161	0.60	66,831	69,509	11	0.27
<b>TOTAL FOR MAP NO. 4</b>								<b>3.18</b>				<b>7,161</b>	<b>0.60</b>	<b>66,831</b>	<b>69,509</b>	<b>11</b>	<b>0.27</b>
<b>TOTAL FOR PROJ NO. 2026CPT.10.06.10132</b>								<b>3.18</b>				<b>7,161</b>	<b>0.60</b>	<b>66,831</b>	<b>69,509</b>	<b>11</b>	<b>0.27</b>
<b>GRAND TOTAL</b>								<b>10.23</b>				<b>7,164</b>	<b>1.00</b>	<b>198,361</b>	<b>188,482</b>	<b>20</b>	<b>1.00</b>

